



## City of Placerville

### Engineering Department

3101 Center Street, Placerville, CA 95667  
(530) 642-5250

### **ADDENDUM NUMBER 1**

**Dated: October 10, 2023**

**to the**

**Notice to Bidders, Contract, Proposal, Special Provisions and Plans for Construction of  
BROADWAY MAINTENANCE PROJECT CIP #42003  
City of Placerville**

**Bids Due (Revised Date & Time): Tuesday, October 24, 2023; 2:00 p.m.  
City Hall, 3rd Floor, 3101 Center Street Placerville, California**

This addendum is issued to the Broadway Maintenance Project. Submit proposals for this work with the understanding and full consideration of this Addendum. The revisions declared in this Addendum are essential parts of the Contract.

Bidders are also directed to sign this Addendum as acknowledged, and attach the complete, signed Addendum to the Proposal.

**The following changes are made to the Notice to Bidders, Proposal, Special Provisions and Project Plans Project Plans:**

#### **Notice to Bidders**

Replace the paragraph in the Completion of Work section in the Notice to Bidders with the following:

COMPLETION OF WORK: Paving operations are anticipated to occur at night from the hours of 10 pm to 8 am, Sunday through Thursday. Concrete and utility work is anticipated to occur during normal working hours from 7 am to 5 pm, Monday through Friday. No work shall be performed by the Contractor on Friday nights, Saturday, or City designated holidays.

#### **Proposal**

Replace Contractor's Bid and Bid Price Schedule with revised Contractor's Bid and Bid Price Schedule.

#### **Questions and Answers**

The City received the following questions:

Question 1: What items are included in the *Connect to Existing Water System* bid item?

City's response to Question 1: Refer to paged SP-46 – SP-47 of the Special Provisions for details on what is included in the *Connect to Existing Water System* bid item.

Question 2: After review of the outfall of the 36" UV CIPP Liner, it appears outfall is towards the middle of the culvert. A 36" UV liner is very heavy and has to be pulled in, due to the location of the outfall this is going to make the install extremely difficult with the weight of the liner and the bends that would need to be negotiated for install. Can a

manhole be added to the project and placed just before the bridge and the last portion of the 36" Liner be made into two segments?

City's response to Question 2: A manhole has been added to the plans on revised sheet C23.

Question 3: Can you provide depths of the Manholes for the UV CIPP Liner?

City's response to Question 3: Refer to plan sheet revisions for sheet C23, below and attached, for manhole and inlet depths.

Question 4: Special Provisions Page SP-31 62-2.02A Summary Paragraph 3 - States that "The minimum thickness for the UV Liner Shall be shown as on the contract documents." There are no minimum thickness's in the documents, please provide any minimum thickness requirements.

City's response to Question 4: Thickness for the UV liner shall be calculated using ASTM F1216 Standard Practice for Rehabilitation of Existing Pipelines and Conduits by the Inversion and Curing of a Resin-Impregnated Tube or ASTM F1743 Standard Practice for Rehabilitation of Existing Pipelines and Conduits by Pulled-in-Place Installation of Cured-in-Place Thermosetting Resin Pipe (CIPP).

Question 5: Please provide physical property requirements for the UV CIPP Liner.

City's response to Question 5: At a minimum, the pipe lining shall have the following physical properties:

<b>Polyester Resin</b>	<b>ASTM Test</b>	<b>Initial Values psi (MPa)</b>
Flexural Strength	D790	4,500 (31)
Flexural Modulus	D790	250,000 (1,710)
Tensile Strength	D638	3,000 (20.5)
<b>Vinyl-Ester Resin</b>	<b>ASTM Test</b>	<b>Initial Values psi (MPa)</b>
Flexural Strength	D790	5,000 (34.5)
Flexural Modulus	D790	300,000 (2,050)
Tensile Strength	D638	4,000 (27.5)

Initial Values are determined by ASTM D638 and D790.

### **Project Plans**

The following sheets of the original Project Plans have been modified as follows. Sheets indicated with an asterisk (\*) are to be replaced with the revised sheets attached to this Addendum.

- Sheet C05: Revised pipe zone bedding material in detail 18. Pipe zone backfill shall be 3/4" Class II AB.
- Sheet C14\*: Revised alignment of new water main and limits of steel casing pipe in Mosquito Road. Added a new water service replacement for property at southwest corner of the Mosquito & Broadway intersection (1144 Broadway).
- Sheet C18\*: Revised 10" gate valve at Sta. 40+38 to be an insertion valve.
- Sheet C19\*: Revised alignment of new water main and limits of steel casing pipe in Mosquito Road.

- Sheet C23\*: Added depths to the existing storm drain manholes and inlets in the systems receiving UV Cured SD CIPP Lining. Added 60" storm drain manhole to this stretch of storm drain to facilitate installation of liner.

### **Special Provisions**

Modifications to the Special Provisions are as follows:

- Add to Section 19 EARTHWORK:

**Add to section 19-1.03:**

It is anticipated that all excavating efforts will be achievable by use of a medium sized excavator, such as a CAT 325 excavator with rock bucket, or other industry approved piece of similar equipment.

- Add to Section 77-4.02B(6)(3) MATERIALS:  
Insertion valve shall be either Hydra Stop Instavalue 250, Mueller Permaseal Insertion Valve, Romac Industries Inserta Valve, or approved equal. Insertion valve to be installed per manufacturer's specifications.
- Replace the fourth (4<sup>th</sup>) paragraph in section 77-4.04 PAYMENT with:  
The various Gate Valve and Insertion Valve bid items shall be paid for on a per unit basis. Measurement shall be based on the actual number of Gate Valves and Insertion Valves installed. The contract unit price paid for each Gate Valve and Insertion Valve shall include full compensation for all labor, materials, tools, equipment and incidentals, and for doing all the work involved, complete and in place, as specified per Section 3.6 and EID Standard Drawing W12 of the El Dorado Irrigation District Design Standards and as directed by the City Engineer and Department of Public Works, manufacturer's specifications and no additional compensation will be allowed.
- Revise the first sentence in the paragraph under 77-1.02B Pipe Zone to:  
Material for the pipe zones of water and sewer mains, and storm drain pipes shall be 3/4 inch Class II Aggregate Base.
- Add to section 77-1.02B Pipe Zone  
Backfill material for the pipe zones for water service lines shall be consistent with Section 19-3.02F(2) of the Caltrans standards Specifications:

Sand bedding must consist of sand:

1. Free of clay or organic material
2. Suitable for the purpose intended
3. Complying with the gradation requirements shown in the following table:

Sieve size	Percentage passing
No. 4	90–100
No. 200	0–5

**Additional Clarifications**

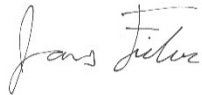
The City has obtained a Caltrans Encroachment permit (see Attachments). Contractor is advised that they will need to apply for a double permit, or permit for construction, with Caltrans.

The City has performed CCTV inspections of the storm drain system. The video footage and inspection reports can be obtained from the following link:  
[https://rey-ftp.reyengineers.com/public/folder/yFzA\\_EEn2EiQ2Q23pL76KA/Broadway%20Maintenance%20SD%20CCTV](https://rey-ftp.reyengineers.com/public/folder/yFzA_EEn2EiQ2Q23pL76KA/Broadway%20Maintenance%20SD%20CCTV)

**Attachments:**

- Revised Contractor's Bid and Bid Price Schedule
- Revised Plan Sheets
- Sign-in sheet from Pre-Bid Conference
- Caltrans Encroachment Permit (separate PDF attachment)

This addendum has been prepared under the direction of the following registered Civil Engineer:



10/10/2023

---

James W. Fisher, PE

Date



**CONTRACTOR'S BID AND BID PRICE SCHEDULE**

**BROADWAY MAINTENANCE PROJECT CIP No. 42003**

<b>Item No.</b>	<b>Item Description</b>	<b>Unit of Measure</b>	<b>Estimated Quantity</b>	<b>Unit Price (In Figures)</b>	<b>Item Total (In Figures)</b>
1	Mobilization/Demobilization	LS	1	\$	\$
2	Traffic Control System	LS	1	\$	\$
3	Water Pollution Control Plan	LS	1	\$	\$
4	Construction Staking	LS	1	\$	\$
5	Lead Compliance Plan	LS	1	\$	\$
6	Temporary Drainage Inlet Protection	EA	17	\$	\$
7	Remove Base & Surfacing	CY	555	\$	\$
8	2" AC Grind	SF	134,800	\$	\$
9	AC Grind (Conform)	LF	535	\$	\$
10	4" Digout	SF	19,750	\$	\$
11	Remove Striping	LF	130	\$	\$
12	Remove Pavement Markings	SF	150	\$	\$
13	Adjust Utility to Grade	EA	67	\$	\$
14	Remove Bus Shelter	LS	1	\$	\$
15	Hot Mix Asphalt (HMA)	TON	2,540	\$	\$
16	Class 2 AB	CY	240	\$	\$
17	Minor Concrete (Sidewalk)	SF	2,425	\$	\$
18	Minor Concrete (Curb & Gutter)	LF	820	\$	\$
19	Minor Concrete (Curb (Type B))	LF	150	\$	\$
20	Minor Concrete (Seatwall)	LF	36	\$	\$
21	Minor Concrete (Stairs)	CY	2	\$	\$

Item No.	Item Description	Unit of Measure	Estimated Quantity	Unit Price (In Figures)	Item Total (In Figures)
22	Stamped Crosswalk	SF	3,330	\$	\$
23	Install Simme-Seat	EA	1	\$	\$
24	Relocate Roadside Sign	EA	2	\$	\$
25	Roadside Sign	EA	13	\$	\$
26	Traffic Stripe	LF	11,030	\$	\$
27	Pavement Marking	SF	2,850	\$	\$
28	Green Bike Lane Marking	SF	4,425	\$	\$
29	Green Bike Lane Stripe	LF	4,200	\$	\$
30	Curb Paint Green	LF	44	\$	\$
31	Detectable Warning Surface	EA	6	\$	\$
32	Cut & Cap (E)Pipe	EA	18	\$	\$
33	Abandon (E)W Pipe with Slurry	CY	2	\$	\$
34	Connect to Existing Water System	EA	9	\$	\$
35	Replace Water Service Line	EA	7	\$	\$
36	Remove and Relocate Water Meter	EA	2	\$	\$
37	6" PVC C-900 (DR-14) Water Pipe	LF	20	\$	\$
38	8" PVC C-900 (DR-14) Water Pipe	LF	595	\$	\$
39	10" PVC C-900 (DR-14) Water Pipe	LF	110	\$	\$
40	6" DIP Class 350 Water Pipe	LF	250	\$	\$
41	8" DIP Class 350 Water Pipe	LF	30	\$	\$
42	14" Steel Casing Pipe	LF	93	\$	\$
43	Water Meter and Box	EA	1	\$	\$
44	1" Water Service Line	EA	1	\$	\$
45	Fire Hydrant Assembly & Lateral	EA	1	\$	\$

Item No.	Item Description	Unit of Measure	Estimated Quantity	Unit Price (In Figures)	Item Total (In Figures)
46	Fire Hydrant Pavement Marker	EA	8	\$	\$
47	6"x6"x6" Tee	EA	1	\$	\$
48	8"x8"x6" Tee	EA	2	\$	\$
49	10"x10"x6" Tee	EA	2	\$	\$
50	10"x10"x8" Tee	EA	1	\$	\$
51	6" Gate Valve	EA	7	\$	\$
52	8" Gate Valve	EA	3	\$	\$
53	10" Gate Valve	EA	6	\$	\$
54	2" Combination Blow Off and 1" Combination Air Valve Assembly	EA	1	\$	\$
55	Testing, Disinfection, and Flushing	LS	1	\$	\$
56	18" PVC (SDR-26) Sanitary Sewer Pipe	LF	1,440	\$	\$
57	4" Sanitary Sewer (SS) Service	EA	12	\$	\$
58	4" Sanitary Sewer Service Connection to (E)Sanitary Sewer Service	EA	3	\$	\$
59	48" SSMH	EA	4	\$	\$
60	Connect to (E)SSMH	EA	2	\$	\$
61	Remove (E)Pipe	LF	180	\$	\$
62	Remove Drainage Structure	EA	4	\$	\$
63	Clean & Flush SD Pipe	LF	178	\$	\$
64	Abandon and Fill (E)SD Pipe	CY	15	\$	\$
65	60" SDMH	EA	3	\$	\$
66	Type B Drop Inlet	EA	4	\$	\$
67	DI Marker	EA	10	\$	\$
68	Connect to (E)SDMH	EA	2	\$	\$



Item No.	Item Description	Unit of Measure	Estimated Quantity	Unit Price (In Figures)		Item Total (In Figures)	
69	12" UV Cured SD CIPP Lining	LF	280	\$		\$	
70	24" UV Cured SD CIPP Lining	LF	225	\$		\$	
71	36" UV Cured SD CIPP Lining	LF	365	\$		\$	
72	15" HDPE Storm Drain Pipe	LF	50	\$		\$	
73	18" HDPE Storm Drain Pipe	LF	60	\$		\$	
74	36" HDPE Storm Drain Pipe	LF	145	\$		\$	
75	Underdrain	LF	40	\$		\$	
76	Manhole Plug	EA	3	\$		\$	
77	Under Sidewalk Drain	EA	1	\$		\$	
78	Investigate SD Pipe	LS	1	\$		\$	
79	Broadband Conduit	LF	3,195	\$		\$	
80	Broadband Vault (17"x30")	EA	12	\$		\$	
81	Broadband Vault (30"x48")	EA	1	\$		\$	
82	Broadband Vault (30"x60")	EA	8	\$		\$	
83	Streetlight Conduit	LF	17	\$		\$	
84	Streetlight Pole Base and Grounding	EA	1	\$		\$	
85	Insertion Valve	EA	1	\$		\$	

**TOTAL BASE BID AMOUNT**      \$ \_\_\_\_\_

**Total Project Bid Amount for Item No.'s 1 through 85 shall be (spell out):**

\_\_\_\_\_ **Dollars and**

\_\_\_\_\_ **Cents.**

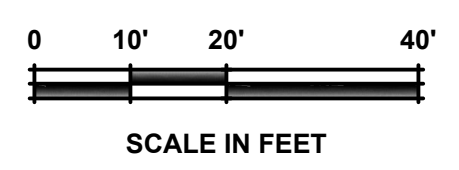
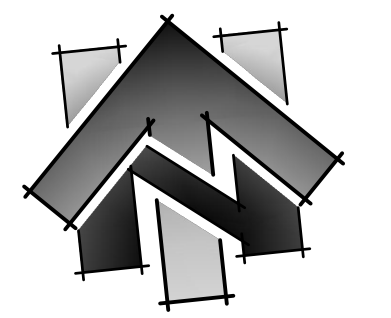
\_\_\_\_\_  
**SIGNATURE OF BIDDER**

\_\_\_\_\_  
**PRINT NAME AND TITLE OF BIDDER**

(NOTICE: Bidder's failure to execute the questionnaires and statements contained in the Proposal as required by applicable laws and regulations, or the determinations by the City of Placerville based upon those questionnaires and statements, may prohibit award of the subject Contract to the Bidder.)

**BIDDER'S PROOF OF DIR REGISTRATION**

The Bidder agrees that its Proof of DIR Registration pursuant to Labor Code Section 1725.5 is attached hereto and made a condition of this bid.



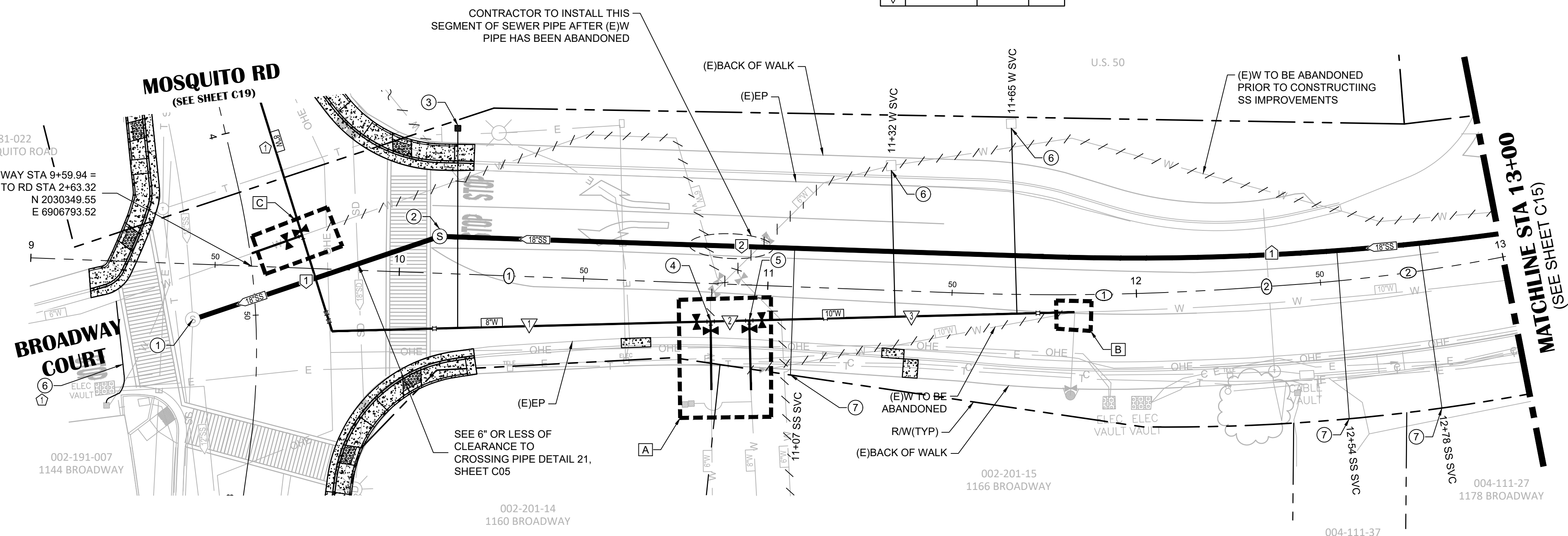
LINE TABLE		
#	BEARING	LENGTH
1	S85°52'10"E	250.56'
2	N87°57'24"E	12.23'

CURVE DATA			
#	LENGTH	RADIUS	DELTA
1	78.7'	730.0'	6°10'26"
2	58.5'	483.0'	6°56'41"

SANITARY SEWER MAIN PIPE LINE DATA			
#	BEARING	LENGTH	SIZE
1	N73°21'39"E	70.7'	18"
2	S86°07'24"E	163.8'	18"

SANITARY SEWER MAIN PIPE CURVE DATA				
#	LENGTH	RADIUS	DELTA	SIZE
1	123.7'	743.0'	9°32'24"	18"

WATER MAIN PIPE LINE DATA			
#	BEARING	LENGTH	SIZE
1	S89°30'09"E	98.8'	8"
2	S89°30'07"E	10.5'	8"
3	S89°30'09"E	88.3'	10"



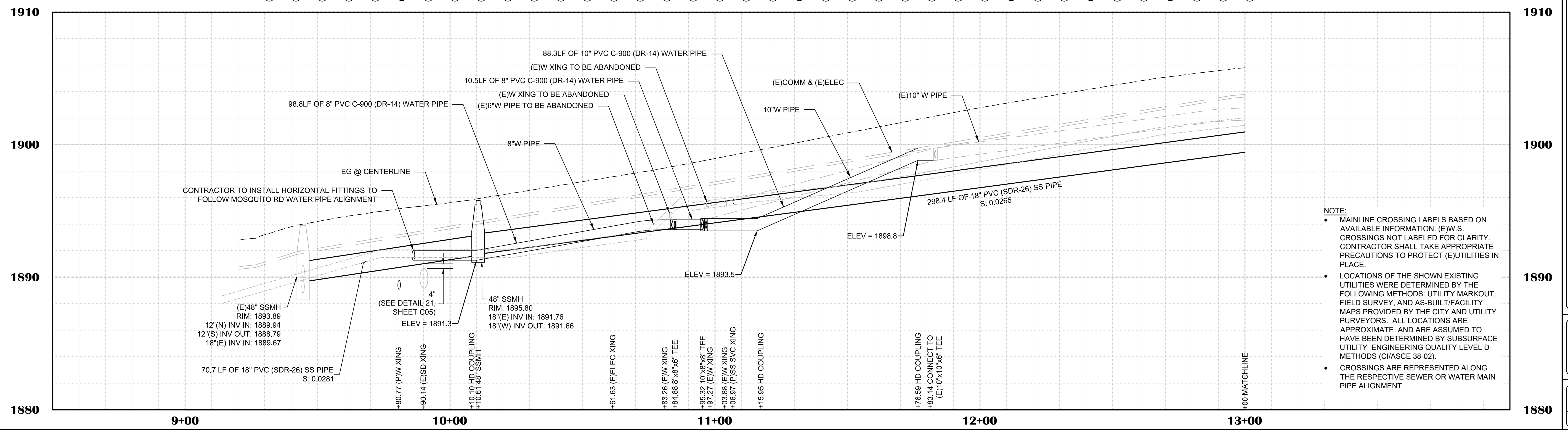
# BROADWAY

- SHEET LEGEND:**  
SEE SHEET C02 FOR FULL LEGEND.
- ⊕ CONSTRUCTION NOTE (SEE "CONSTRUCTION NOTES" ON THIS SHEET)
  - ⊕ CENTERLINE ALIGNMENT LINE SEGMENT (SEE TABLE ON THIS SHEET)
  - ⊕ CENTERLINE ALIGNMENT CURVE SEGMENT. (SEE TABLE ON THIS SHEET)
  - ⊕ SANITARY SEWER ALIGNMENT LINE SEGMENT (SEE TABLE ON THIS SHEET)
  - ⊕ SANITARY SEWER ALIGNMENT CURVE SEGMENT (SEE TABLE ON THIS SHEET)
  - ▽ WATER MAIN ALIGNMENT LINE SEGMENT (SEE TABLE ON THIS SHEET)
  - ⊗ CONNECT TO (E)W SYSTEM DETAIL REFERENCE (SEE WATER CONNECTION DETAILS, SHEET C13)
- ⚡ ABANDON (E)WATER PIPE FOR CUT & CAP (E)PIPE LOCATIONS

- CONSTRUCTION NOTES:**
- 1 **9+44.53 (15.0' R)**  
CONNECT TO (E)48" SSMH PER EID STD DTL S09C AND S09F.  
• 18"(E) INV IN: 1889.67
  - 2 **10+10.61 (10.0' L)**  
48" SSMH PER EID STD DTL S09 (SEE PROFILE FOR RIM & INV ELEVATIONS)
  - 3 **10+14.41 (38.6' L)**  
1" WATER SERVICE LINE AND WATER METER AND BOX PER DETAIL ON SHEET C04
  - 4 **10+84.88 (10.3' R)**  
8"x8"x6" TEE  
1 - 8" GATE VALVE (WEST)  
1 - 6" GATE VALVE (SOUTH)
  - 5 **10+95.32 (9.6' R)**  
10"x10"x8" TEE  
1 - 10"x8" REDUCER (WEST)  
1 - 10" GATE VALVE (EAST)  
1 - 6" GATE VALVE (SOUTH)
  - 6 REPLACE 1" WATER SERVICE LINE
  - 7 STUB 4" SS SVC AT R/W

- SHEET NOTES:**
1. QUANTITIES SHOWN REPRESENT IMPROVEMENTS DISPLAYED ON THIS SHEET.
  2. SEE PAVEMENT PLAN FOR ROADWAY SURFACE IMPROVEMENTS.

ELEV @ TOP OF W PIPE ▶  
EG ABOVE W PIPE ▶



- NOTE:**
- MAINLINE CROSSING LABELS BASED ON AVAILABLE INFORMATION. (E)W.S. CROSSINGS NOT LABELED FOR CLARITY. CONTRACTOR SHALL TAKE APPROPRIATE PRECAUTIONS TO PROTECT (E)UTILITIES IN PLACE.
  - LOCATIONS OF THE SHOWN EXISTING UTILITIES WERE DETERMINED BY THE FOLLOWING METHODS: UTILITY MARKOUT, FIELD SURVEY, AND AS-BUILT/FACILITY MAPS PROVIDED BY THE CITY AND UTILITY PURVEYORS. ALL LOCATIONS ARE APPROXIMATE AND ARE ASSUMED TO HAVE BEEN DETERMINED BY SUBSURFACE UTILITY ENGINEERING QUALITY LEVEL D METHODS (CIASCE 38-02).
  - CROSSINGS ARE REPRESENTED ALONG THE RESPECTIVE SEWER OR WATER MAIN PIPE ALIGNMENT.

NO.	REVISION	DESCRIPTION	CHECKED BY	DATE

DRAWING SCALE	
HOR. SCALE:	1" = 20'
VERT. SCALE:	1" = 4'



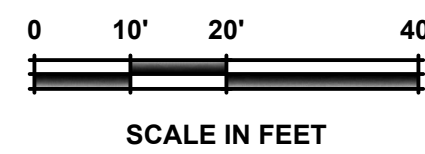
**REY ENGINEERS, INC.**  
Civil Engineers | Land Surveyors | LDR  
925 S. Main Street, Suite 200, Placerville, CA 95330  
Phone: (916) 346-3040 Fax: (916) 346-3003

**BROADWAY MAINTENANCE**  
**CIP # 42003**  
**UTILITY PLAN & PROFILE - BROADWAY - 9+00 TO 13+00**  
**CALIFORNIA**  
CITY OF PLACERVILLE

DRAWING INFO	
DATE:	2023-08-19
DRAWN BY:	TH
DESIGNER:	GVR/KI
REVIEWER:	JWF

PROJECT NO.	<b>6884.014</b>
SHEET NO.	<b>C14 OF C36</b>

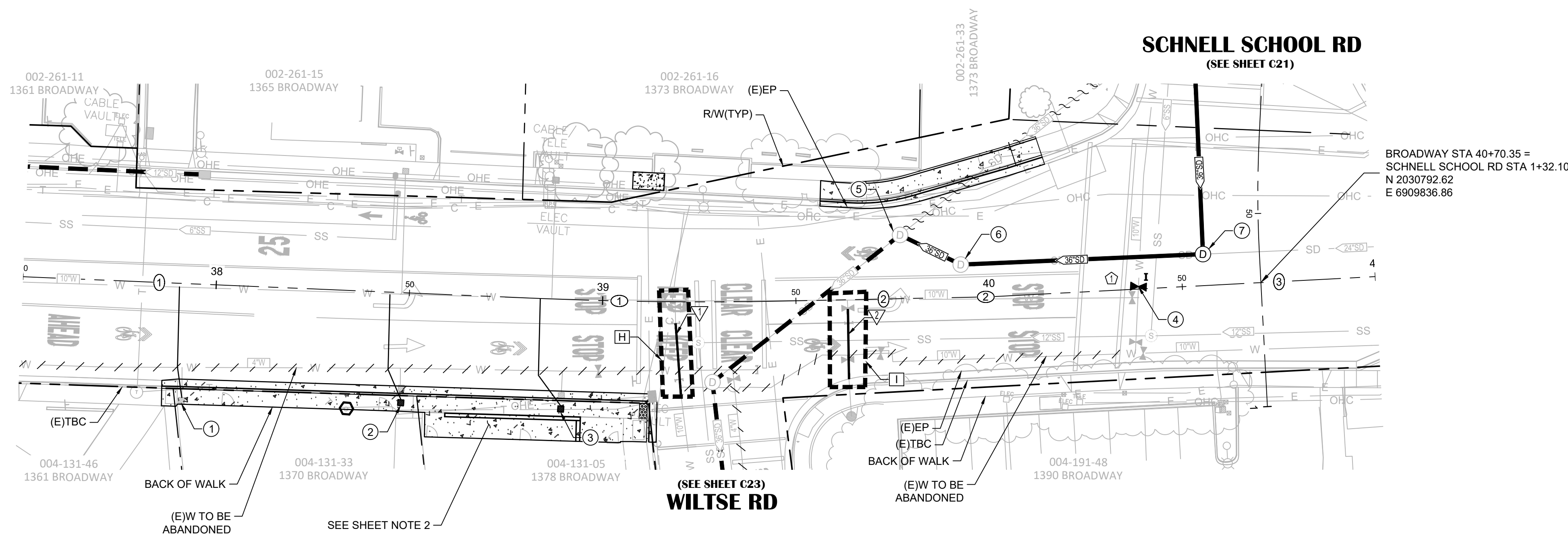




LINE TABLE		
#	BEARING	LENGTH
①	N87°55'34"E	133.97'
②	N84°20'58"E	50.44'
③	N82°31'15"E	96.79'

CURVE DATA			
#	LENGTH	RADIUS	DELTA
①	62.4'	1000.0'	3°34'36"
②	6.4'	200.0'	1°49'42"

WATER MAIN PIPE LINE DATA			
#	BEARING	LENGTH	SIZE
▽	S8°42'10"E	18.3'	10"
▽	S5°21'07"E	18.0'	6"



BROADWAY STA 40+70.35 =  
SCHNELL SCHOOL RD STA 1+32.10  
N 2030792.62  
E 6909836.86

# BROADWAY

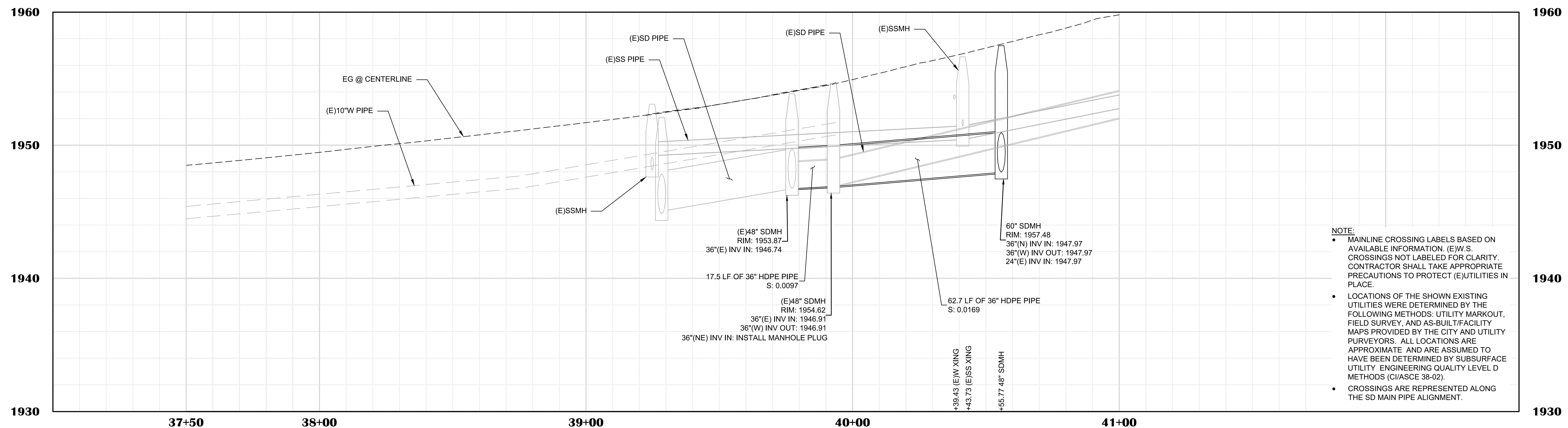
- SHEET LEGEND:**  
SEE SHEET C01 FOR FULL LEGEND.
- ⊕ CONSTRUCTION NOTE (SEE "CONSTRUCTION NOTES" ON THIS SHEET)
  - ⊕ CENTERLINE ALIGNMENT LINE SEGMENT (SEE TABLE ON THIS SHEET)
  - ⊕ CENTERLINE ALIGNMENT CURVE SEGMENT. (SEE TABLE ON THIS SHEET)
  - ▽ WATER MAIN ALIGNMENT LINE SEGMENT (SEE TABLE ON THIS SHEET)
  - ⊗ CONNECT TO (E)W SYSTEM DETAIL REFERENCE (SEE WATER CONNECTION DETAILS, SHEET C13)

- UV CURED SD CIPP LINING (SEE SD REHABILITATION LAYOUT, SHEET C23)
- ////// ABANDON (E)WATER PIPE (SEE DEMOLITION PLANS FOR CUT & CAP (E)PIPE LOCATIONS)
- ~~~~~ ABANDON AND FILL (E)STORM DRAIN PIPE (SEE DEMOLITION PLANS FOR CUT & CAP (E)PIPE LOCATIONS AND FILL QUANTITIES)

**CONSTRUCTION NOTES:**

- ① 37+92.36 (29.5' R)  
REPLACE WATER SERVICE LINE
- ② 38+48.97 (27.7' R)  
REPLACE WATER SERVICE LINE AND REMOVE AND RELOCATE WATER METER
- ③ 38+90.20 (27.6' R)  
REPLACE WATER SERVICE LINE AND REMOVE AND RELOCATE WATER METER
- ④ 40+38.67 (0.63' L)  
INSTALL 10" INSERTION VALVE TO BE INSTALLED PER MANUFACTURER'S SPECIFICATIONS.
- ⑤ 39+77.27 (16.5' L)  
CONNECT TO (E)SDMH (SEE PROFILE FOR RIM & INV ELEVATIONS)  
• 36"(NE) INV IN: INSTALL MANHOLE PLUG PER DETAIL 19, SHEET C05
- ⑥ 39+92.82 (8.5' L)  
CONNECT TO (E)SDMH (SEE PROFILE FOR RIM & INV ELEVATIONS)
- ⑦ 40+55.77 (8.1' L)  
60" SDMH PER DETAIL 17, SHEET C05 (SEE PROFILE FOR RIM & INV ELEVATIONS)

- SHEET NOTES:**
1. QUANTITIES SHOWN REPRESENT IMPROVEMENTS DISPLAYED ON THIS SHEET.
  2. SEE PAVEMENT PLAN FOR ROADWAY SURFACE IMPROVEMENTS.



- NOTE:**
- MAINLINE CROSSING LABELS BASED ON AVAILABLE INFORMATION. (E)W.S. CROSSINGS NOT LABELED FOR CLARITY. CONTRACTOR SHALL TAKE APPROPRIATE PRECAUTIONS TO PROTECT (E)UTILITIES IN PLACE.
  - LOCATIONS OF THE SHOWN EXISTING UTILITIES WERE DETERMINED BY THE FOLLOWING METHODS: UTILITY MARKOUT, FIELD SURVEY, AND AS-BUILT/FACILITY MAPS PROVIDED BY THE CITY AND UTILITY PURVEYORS. ALL LOCATIONS ARE APPROXIMATE AND ARE ASSUMED TO HAVE BEEN DETERMINED BY SUBSURFACE UTILITY ENGINEERING QUALITY LEVEL D METHODS (CI/ASCE 38-02).
  - CROSSINGS ARE REPRESENTED ALONG THE SD MAIN PIPE ALIGNMENT.

NO.	REVISION DESCRIPTION	CHECKED BY	DATE

**DRAWING SCALE**  
HOR. SCALE: 1" = 20'  
VERT. SCALE: 1" = 4'



**REY ENGINEERS, INC.**  
Civil Engineers | Land Surveyors | LIDAR  
925 S. Pine Street, Suite 200, Placerville, CA 95630  
Phone: (916) 366-3040 Fax: (916) 366-3003

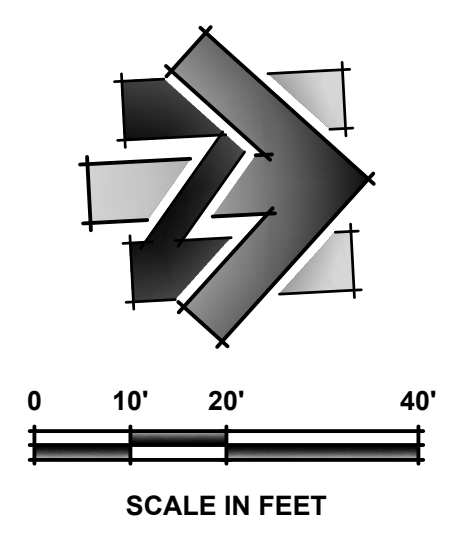
**BROADWAY MAINTENANCE**  
CIP # 42003  
UTILITY PLAN & PROFILE - BROADWAY - 37+50 TO 41+00  
CALIFORNIA  
CITY OF PLACERVILLE

**DRAWING INFO**  
DATE: 2023-08-19  
DRAFTER: TH  
DESIGNER: GVR/KI  
REVIEWER: JWF

PROJECT NO.  
**6884.014**  
SHEET NO. C18 OF C36



N:\6884 - City of Placerville\014 - Broadway Maintenance\10 - CAD Drawings\Improvement Plans\6884.014 UTIL SHEET.dwg Oct 10, 2023 - 4:51pm, VONCrew

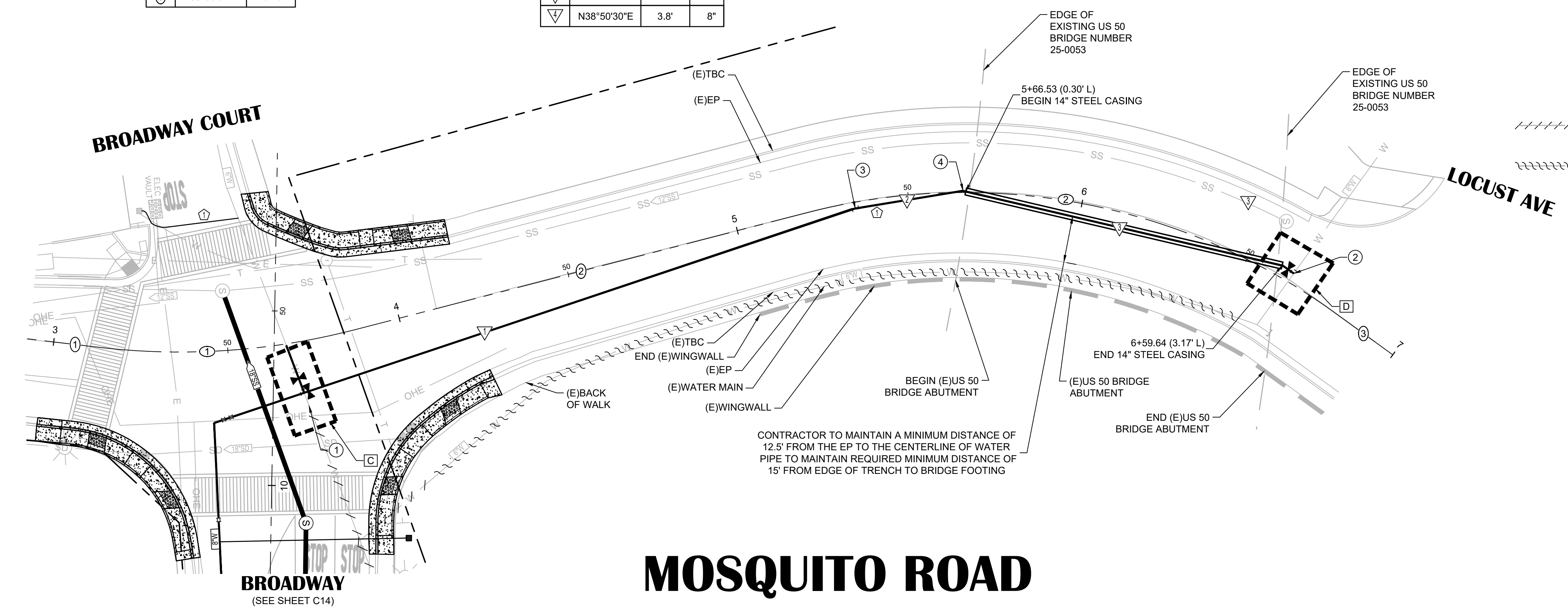


LINE TABLE		
#	BEARING	LENGTH
①	N9°59'39"E	12.35'
②	N11°22'15"W	133.72'
③	N39°06'34"E	20.76'

CURVE DATA			
#	LENGTH	RADIUS	DELTA
①	74.6'	200.0'	21°21'54"
②	158.6'	180.0'	50°28'49"

WATER MAIN PIPE LINE DATA			
#	BEARING	LENGTH	SIZE
▽	N15°20'52"W	193.5'	8"
▽	N6°09'30"W	31.3'	8"
▽	N16°20'30"E	94.1'	8"
▽	N38°50'30"E	3.8'	8"

WATER MAIN PIPE CURVE DATA			
#	LENGTH	RADIUS	DELTA
△			8"



# MOSQUITO ROAD

- SHEET LEGEND:**  
SEE SHEET C02 FOR FULL LEGEND.
- ⊕ CONSTRUCTION NOTE (SEE "CONSTRUCTION NOTES" ON THIS SHEET)
  - ⊕ CENTERLINE ALIGNMENT LINE SEGMENT (SEE TABLE ON THIS SHEET)
  - ⊕ CENTERLINE ALIGNMENT CURVE SEGMENT. (SEE TABLE ON THIS SHEET)
  - ▽ WATER MAIN ALIGNMENT LINE SEGMENT (SEE TABLE ON THIS SHEET)
  - △ WATER MAIN ALIGNMENT CURVE SEGMENT (SEE TABLE ON THIS SHEET)
  - ⊗ CONNECT TO (E)W SYSTEM DETAIL REFERENCE (SEE WATER CONNECTION DETAILS, SHEET C13)
  - ⋯ ABANDON (E)WATER PIPE (SEE DEMOLITION PLANS FOR CUT & CAP (E)PIPE LOCATIONS)
  - ⋯ ABANDON (E)WATER PIPE WITH SLURRY (SEE DEMOLITION PLANS FOR CUT & CAP (E)PIPE LOCATIONS AND SLURRY QUANTITIES)

- CONSTRUCTION NOTES:**
- ① 3+70.22 (18.3' R)  
8"x8"x6" TEE  
1 - 8" GATE VALVE (NORTH)  
1 - 6" GATE VALVE (WEST)
  - ② 6+63.69 (2.9' L)  
8" ELBOW  
1 - 8" GATE VALVE (SOUTH)
  - ③ 11.25" BEND
  - ④ 22.5" BEND

- SHEET NOTES:**
1. QUANTITIES SHOWN REPRESENT IMPROVEMENTS DISPLAYED ON THIS SHEET.
  2. SEE PAVEMENT PLAN FOR ROADWAY SURFACE IMPROVEMENTS.

NO.	REVISION DESCRIPTION	CHECKED BY	DATE

DRAWING SCALE	
HOR. SCALE:	1" = 20'
VERT. SCALE:	1" = 4'

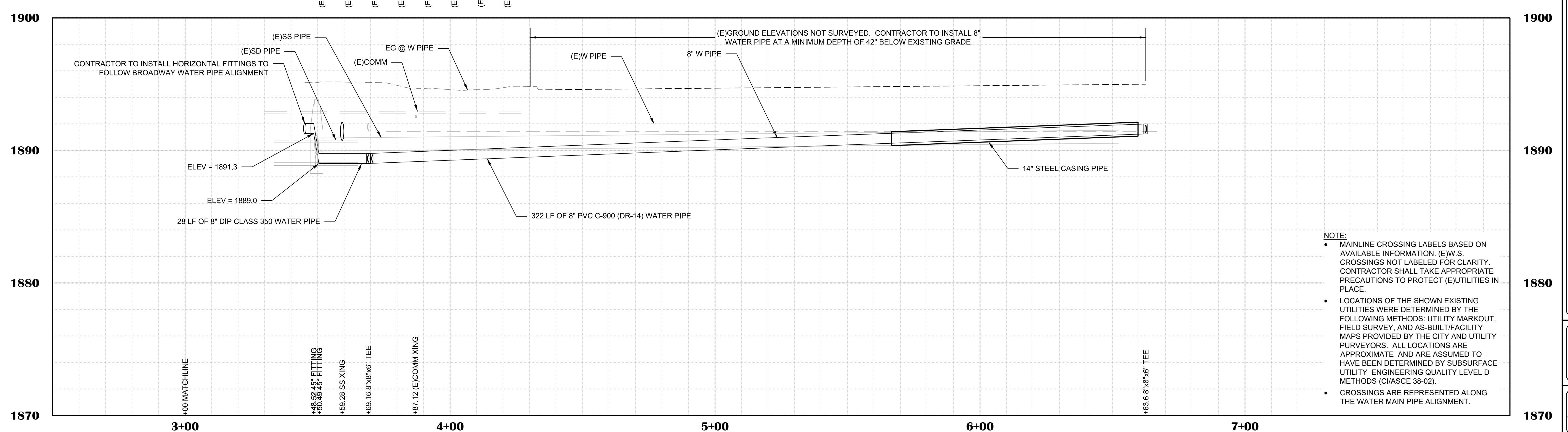


**REY ENGINEERS, INC.**  
Civil Engineers | Land Surveyors | LDR  
925 S. Main Street, Suite 200, Placerville, CA 95630  
Phone: (916) 346-3040 Fax: (916) 346-3003

ELEV @ TOP OF W PIPE ▶
(E)1890.3
(E)1889.6
(E)1889.8
(E)1889.9
(E)1889.9
(E)1890.0
(E)1890.1
(E)1890.2

EG ABOVE W PIPE ▶
1890.33
1889.76
1889.78
1889.86
1889.93
1890.01
1890.09
1890.17



- NOTE:**
- MAINLINE CROSSING LABELS BASED ON AVAILABLE INFORMATION. (E)W.S. CROSSINGS NOT LABELED FOR CLARITY. CONTRACTOR SHALL TAKE APPROPRIATE PRECAUTIONS TO PROTECT (E)UTILITIES IN PLACE.
  - LOCATIONS OF THE SHOWN EXISTING UTILITIES WERE DETERMINED BY THE FOLLOWING METHODS: UTILITY MARKOUT, FIELD SURVEY, AND AS-BUILT/FACILITY MAPS PROVIDED BY THE CITY AND UTILITY PURVEYORS. ALL LOCATIONS ARE APPROXIMATE AND ARE ASSUMED TO HAVE BEEN DETERMINED BY SUBSURFACE UTILITY ENGINEERING QUALITY LEVEL D METHODS (CI/ASCE 38-02).
  - CROSSINGS ARE REPRESENTED ALONG THE WATER MAIN PIPE ALIGNMENT.

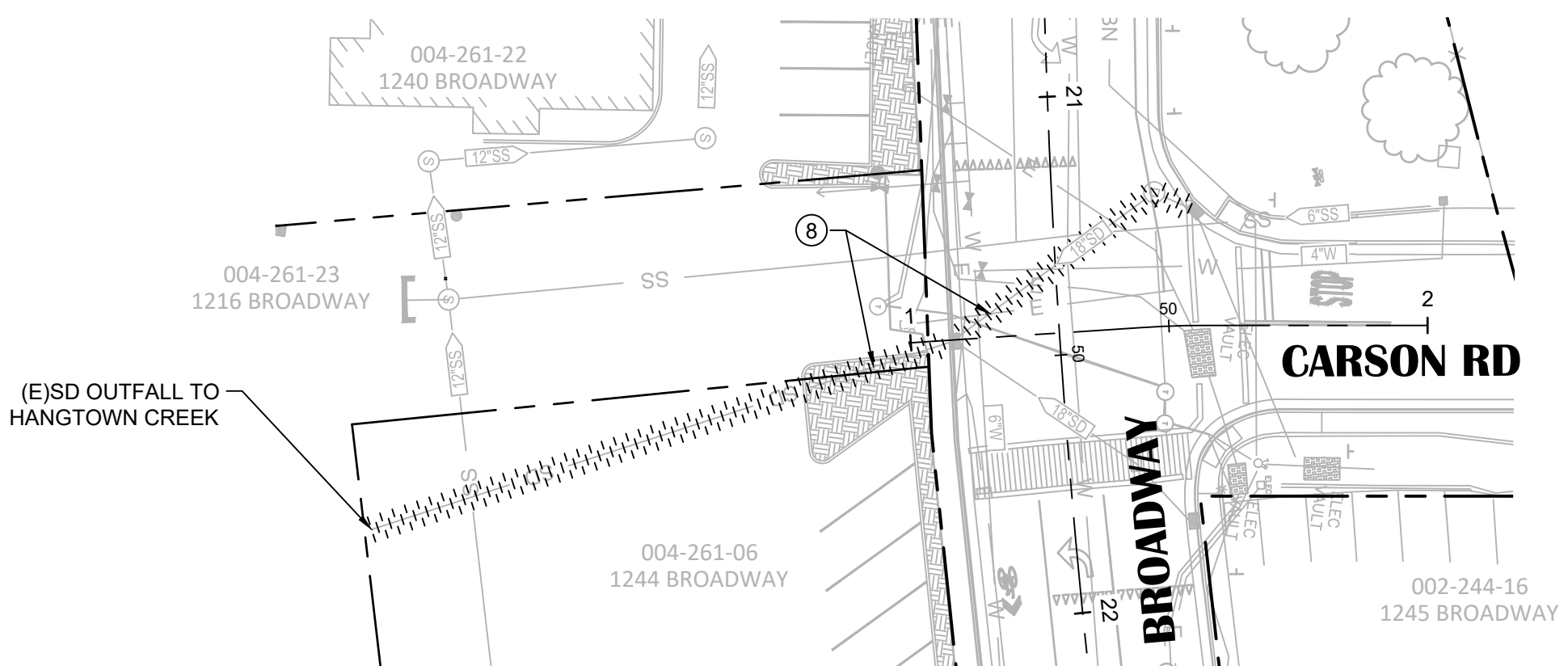
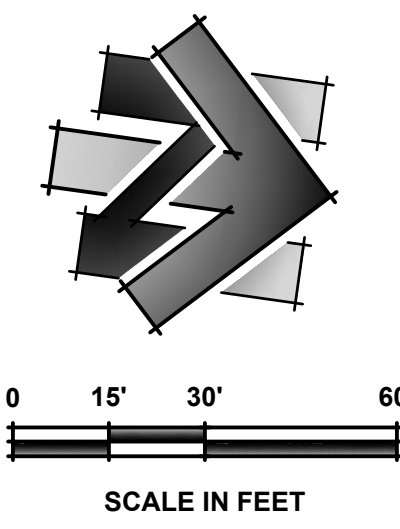
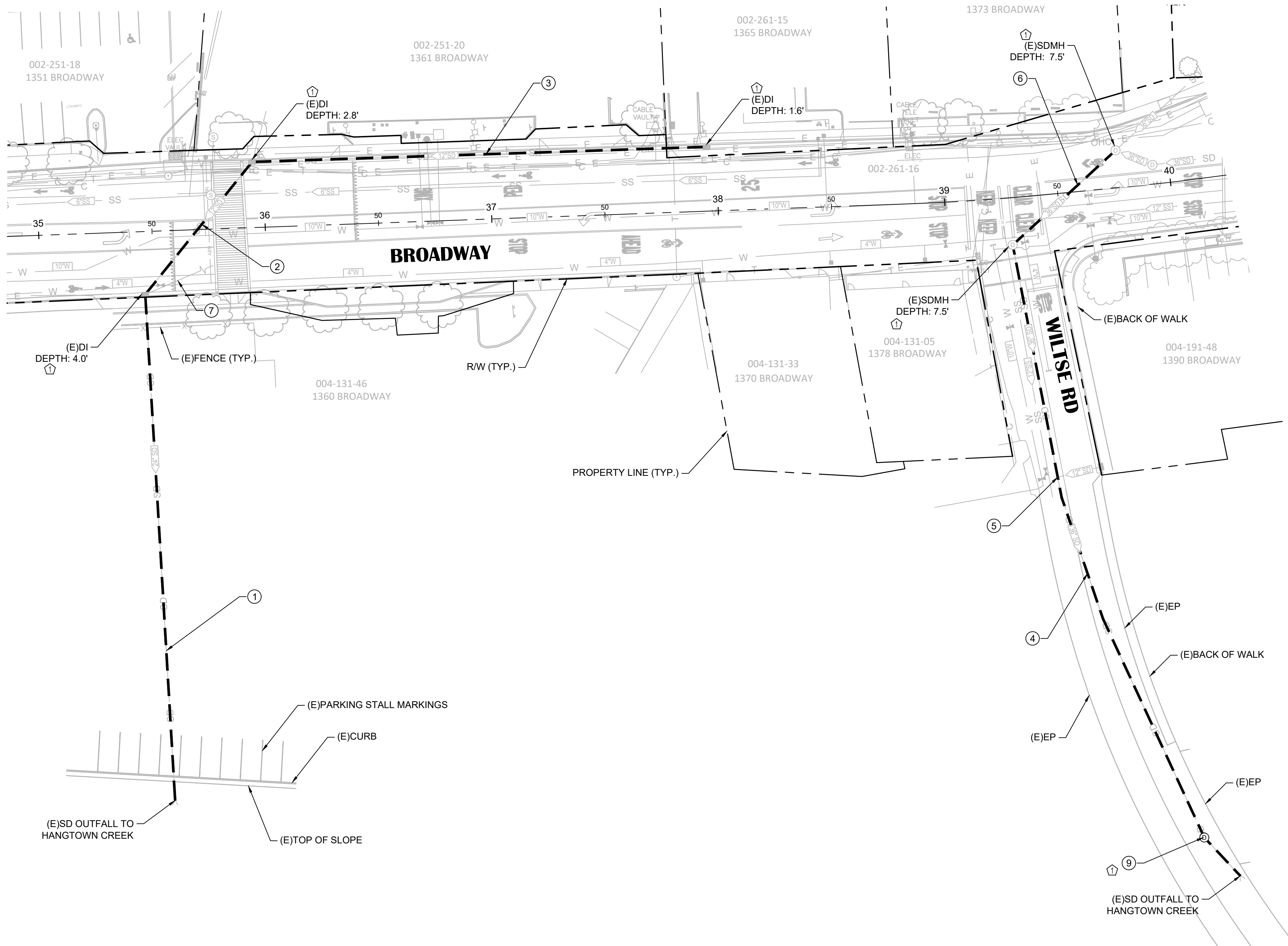
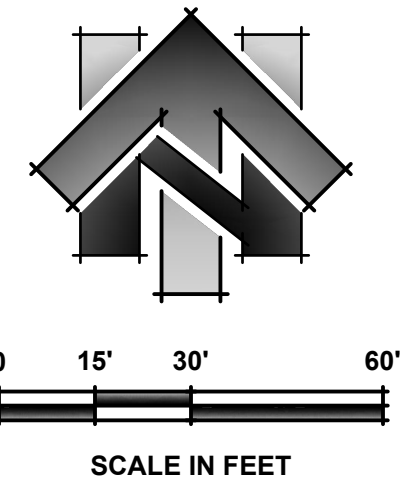
**BROADWAY MAINTENANCE**  
CIP # 42003  
UTILITY PLAN & PROFILE - MOSQUITO RD - 3+00 TO 7+00  
CALIFORNIA  
CITY OF PLACERVILLE

DRAWING INFO	
DATE:	2023-08-19
DRAFTER:	TH
DESIGNER:	GVR/KI
REVIEWER:	JWF

PROJECT NO.	6884.014
SHEET NO.	C19 OF C36





- SHEET LEGEND:**  
(SCALED FOR CLARITY)
- UV CURED SD CIPP LINING AND SIZE
  - CLEAN & FLUSH SD PIPE

- CONSTRUCTION NOTES:**
- ① GROUT EXISTING SD FLOWLINE. INSTALL 223.7 LF OF 24" UV CURED SD CIPP LINING (FROM (E)DI TO (E)SD OUTFALL).
  - ② 75.1 LF OF 12" UV CURED SD CIPP LINING (FROM (E)DI TO (E)DI).
  - ③ 200.6 LF OF 12" UV CURED SD CIPP LINING (FROM (E)DI TO (E)DI).
  - ④ GROUT EXISTING SD FLOWLINE. INSTALL 299.7 LF OF 36" UV CURED SD CIPP LINING (FROM (E)MANHOLE TO (E)SD OUTFALL).
  - ⑤ RESTORE 12" BLIND SD LATERAL CONNECTION AFTER 36" CIPP LINING OF THE SD MAIN IS COMPLETED.
  - ⑥ GROUT EXISTING SD FLOWLINE. 61.7 LF OF 36" UV CURED SD CIPP LINING FROM (E)MANHOLE TO (E)MANHOLE.
  - ⑦ CONTRACTOR TO INVESTIGATE SD PIPE FOR SIZE, DIRECTION, AND LENGTH OF PIPE AND DETERMINE WHETHER PIPE IS ACTIVE. IF PIPE IS ACTIVE, CLEAN AND FLUSH THE PIPE. IF PIPE IS INACTIVE, FILL THE PIPE. CLEANING AND FLUSHING OR FILLING THE PIPE WILL BE PAID FOR AS A CHANGE ORDER.
  - ⑧ CLEAN & FLUSH (E)SD PIPE (178 LF)
  - ⑨ 60" SDMH PER DETAIL 17, SHEET C05. RIM ELEVATION TO MATCH EXISTING GROUND.

- SHEET NOTES:**
1. QUANTITIES SHOWN REPRESENT IMPROVEMENTS DISPLAYED ON THIS SHEET.
  2. SEE PAVEMENT PLAN FOR ROADWAY SURFACE IMPROVEMENTS.
  3. CONTRACTOR TO CLEAN, FLUSH, AND CCTV PIPES PRIOR TO LINING.
  4. CONTRACTOR RESPONSIBLE FOR RESTORING ALL ACTIVE LATERAL CONNECTIONS AFTER LINING.

NO.	REVISION DESCRIPTION	CHECKED BY	DATE
1	ISSUED FOR CONSTRUCTION AND REVISION	JWF	2023-10-10

**DRAWING SCALE**  
HOR. SCALE: 1" = 30'  
VERT. SCALE: N/A



**REY ENGINEERS, INC.**  
Civil Engineers | Land Surveyors | LDAR  
925 S. Main Street, Suite 200, Placerville, CA 95633  
Phone: (916) 366-3040 Fax: (916) 366-3303

**BROADWAY MAINTENANCE**  
**CIP # 42003**  
**SD REHABILITATION LAYOUT**  
CALIFORNIA  
CITY OF PLACERVILLE

**DRAWING INFO**

DATE:	2023-08-19
DRAFTER:	TH
DESIGNER:	GVR/KI
REVIEWER:	JWF

PROJECT NO.  
**6884.014**  
SHEET NO. **C23** OF **C36**

City of Placerville  
Mandatory Pre-Bid Meeting for  
Broadway Sidewalks Project CIP# 41606 &  
Broadway Maintenance Project CIP# 42003  
October 3, 2023 @ 10:00 am



## Sign-In Sheet

INITIAL	NAME	ORGANIZATION	EMAIL	PHONE
DM	Daniel Marquez	FBD Vanguard	dmarquez@v-inc.net	925-500-7628
BJ	Ben Jeffrey	Road-Tech	ben@road-tech.com	530-672-0222
BF	Bayley Follett	Central Valley Eng. + Asphalt	Bayley@cenvalley.com	916-952-3111
KU	Kathy Verhoeven	Martin Gen Engineering	estimating@martingena.com	916-3558001
MC	Mario Cardoza	OE3	mcardoza@oe3.org	916-886-3548
RL	ROBERT LEWIS	PROBUILDERS	ROBERT@SACPROBUILDERS.COM	916 491 0039
M	Matt Veerkamp	DVGE	math.veerkamp@dongveerkamp.com	530 409-0857
ES	ERICA SALANON	B & M	estimating@bm-builders.com	916 638 8020
JF	JIM FISHER	R.E.Y.	JFISHER@REYENGINEERS.COM	916 366-3040
DC	Dick Carr	Dewberry	dccarr@dewberry.com	916 276-4721
RN	Rebecca Neves	City of Placerville	rneves@cityofplacerville.org	530-642-5250
MM	Melissa McConnell	City	mmcconnell@cityofplacerville.org	530 642 5250
VGM	Veronica Garcia	REY	vzgarcia@reyengineers.com	(916) 366 3040